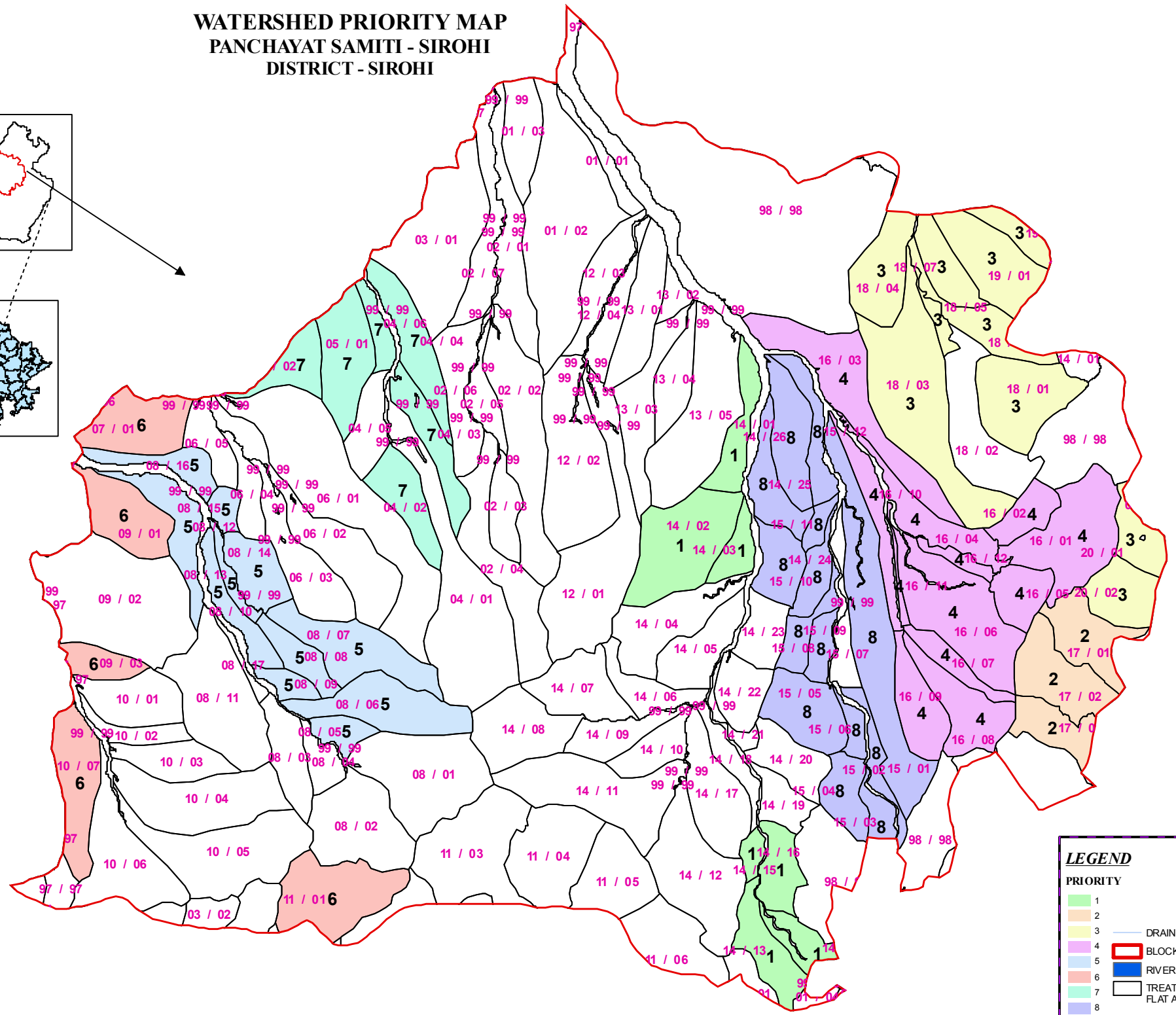
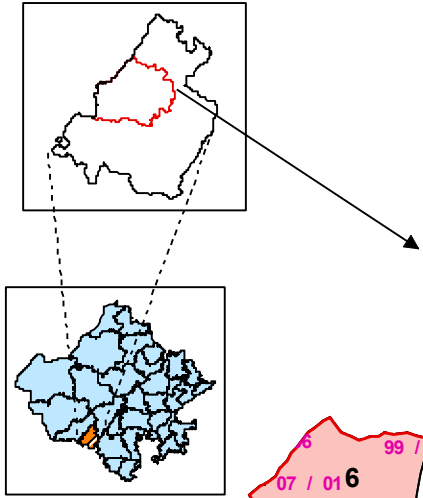


**WATERSHED PRIORITY MAP**  
**PANCHAYAT SAMITI - SIROHI**  
**DISTRICT - SIROHI**



**LEGEND**

**PRIORITY**

- 1
- 2
- 3
- 4
- 5
- 6
- 7
- 8

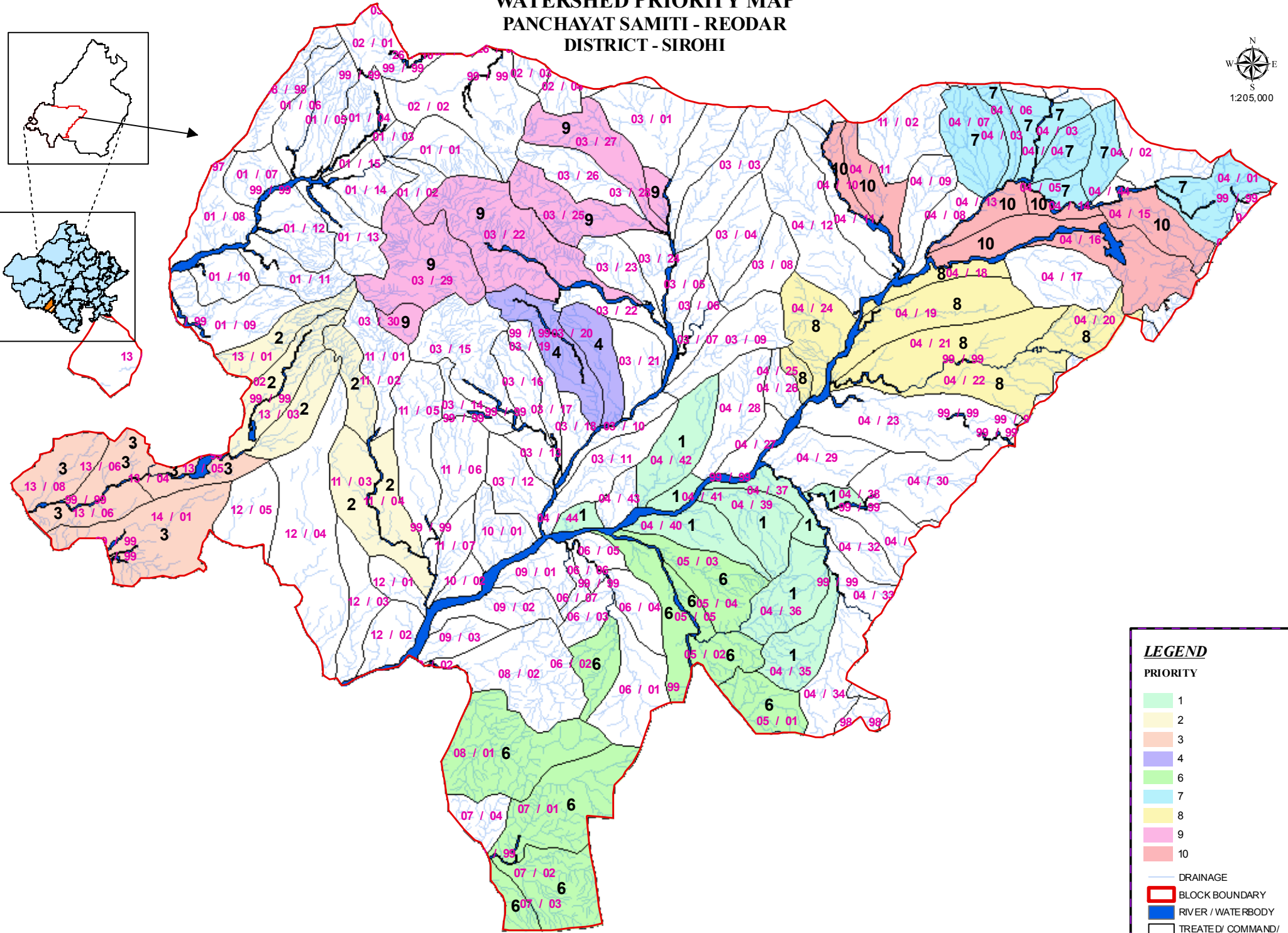
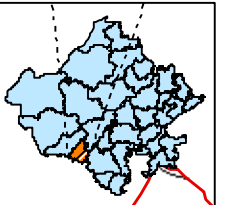
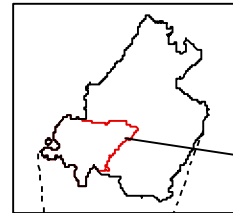
— DRAINAGE

— BLOCK BOUNDARY

— RIVER / WATERBODY

— TREATED/ COMMAND/ FLAT AREA

# WATERSHED PRIORITY MAP PANCHAYAT SAMITI - REODAR DISTRICT - SIROHI



**LEGEND**

**PRIORITY**

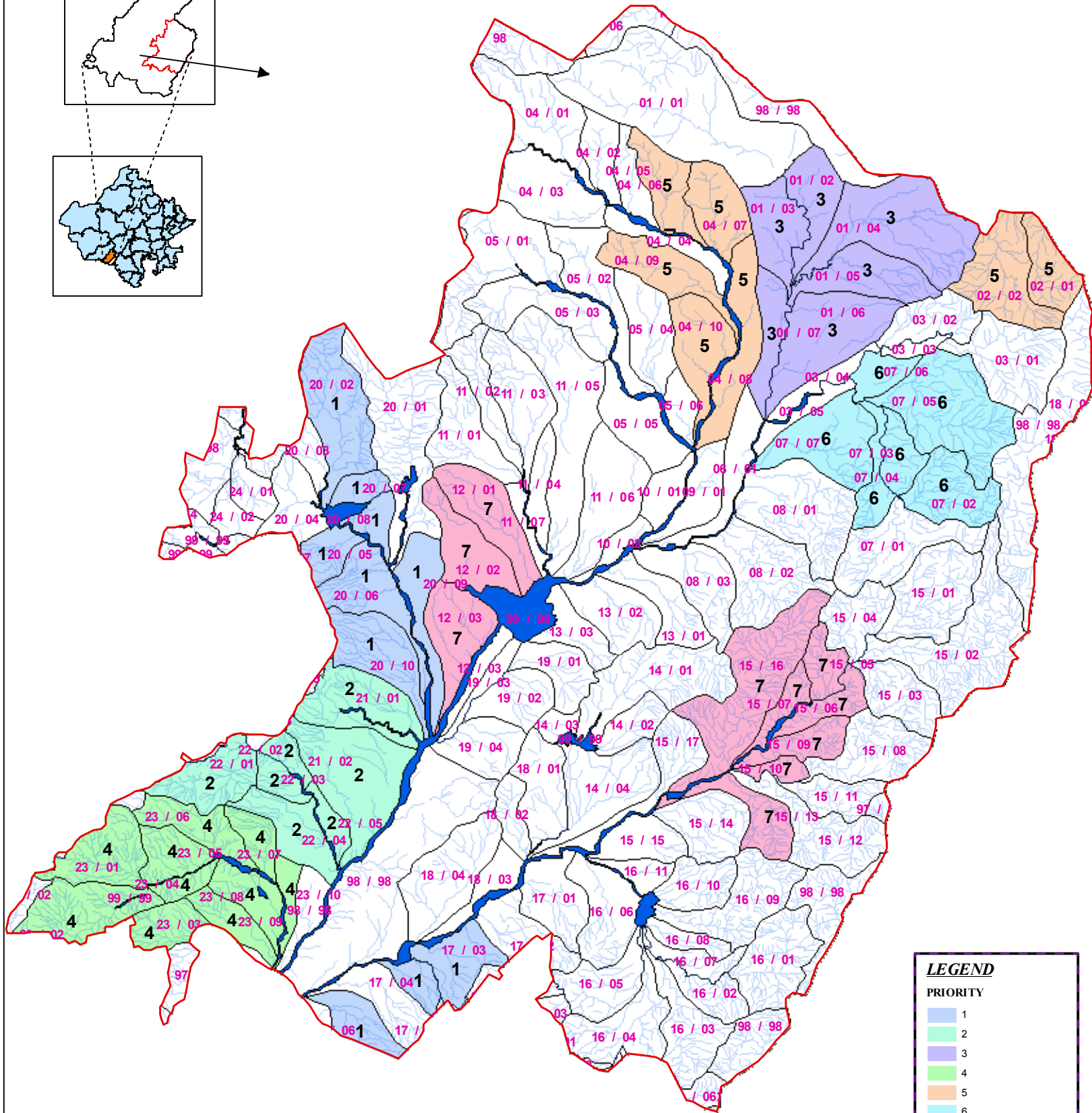
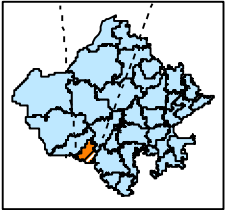
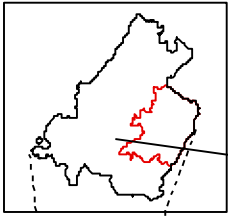
- 1
- 2
- 3
- 4
- 6
- 7
- 8
- 9
- 10

— DRAINAGE  
 BLOCK BOUNDARY  
 RIVER / WATERBODY  
 TREATED/ COMMAND/ FLAT AREA

# WATERSHED PRIORITY MAP PANCHAYAT SAMITI - PINDWARA DISTRICT - SIROHI



1:210,000

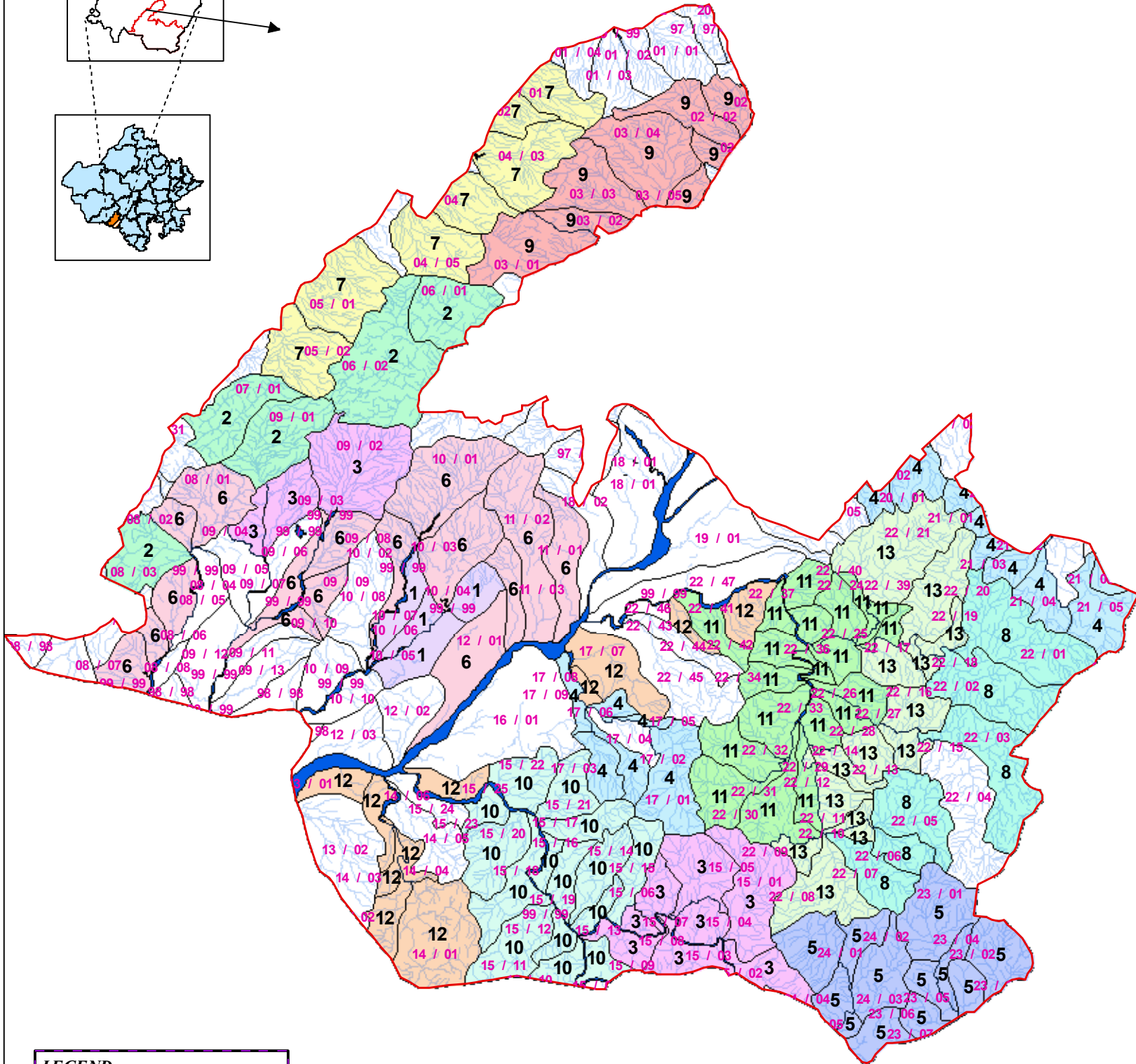
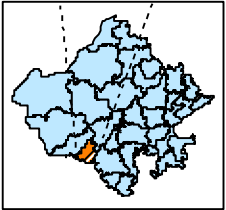
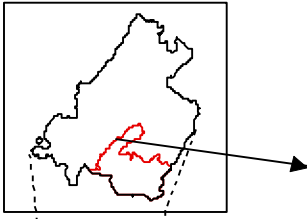


**LEGEND**

**PRIORITY**

- 1
- 2
- 3
- 4
- 5
- 6
- 7
- DRAINAGE
- BLOCK BOUNDARY
- RIVER / WATERBODY
- TREATED/ COMMAND/ FLAT AREA

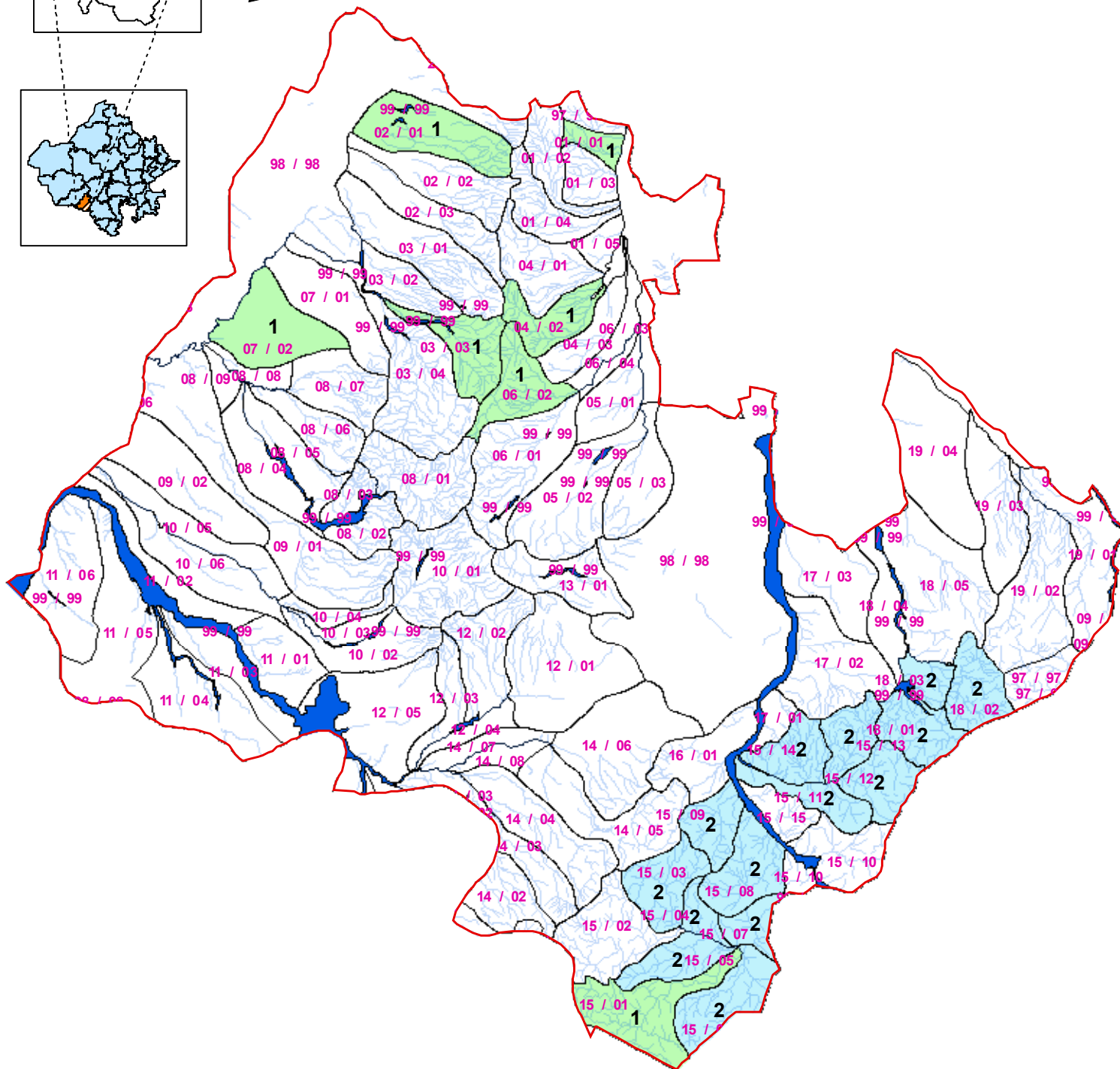
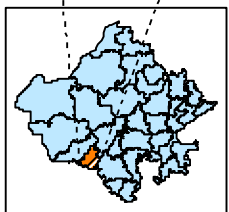
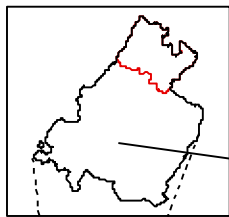
# WATERSHED PRIORITY MAP PANCHAYAT SAMITI - ABUROAD DISTRICT - SIROHI



**LEGEND**

1	8	—	DRAINAGE
2	9	—	BLOCK BOUNDARY
3	10	—	RIVER / WATERBODY
4	11	—	TREATED/ COMMAND/ FLAT AREA
5	12		
6	13		
7			

# WATERSHED PRIORITY MAP PANCHAYAT SAMITI - SHIVGANJ DISTRICT - SIROHI



**LEGEND**

**PRIORITY**

- 1
- 2
- DRAINAGE
- BLOCK BOUNDARY
- RIVER / WATERBODY
- TREATED/ COMMAND/ FLAT AREA

**Priority list of projects of District - SIROHI**

S.No.	Macro/ Micro No.	Area to be trethead	i	ii	iii	iv	v	vi	vii	viii	ix	x	xi	xii	xiii	Total	Ranking	Remarks
1	<b>Block - Sriohi</b>																	
	1/1, 2, 3 & 3/1	5327	5	5	5	5	3	10	10	7.5	15	10	10	10	0	95.50	5	
	2/1, 2, 3, 4, 5, 6	5830	5	5	5	5	3	10	10	7.5	10	10	10	10	0	90.50	30	
	4/2, 3, 4, 6 & 5/1, 2	3582	5	5	5	10	2	10	5	5	15	10	5	10	0	87.00	45	
	6/1, 2, 3, 4, 5	5475	5	5	5	10	3	10	10	7.5	15	10	10	10	0	100.50	3	
	8/5, 6, 7, 8, 9, 10, 12, 13, 14, 15, 16	5150	5	5	5	5	3	10	10	7.5	10	10	10	10	0	90.50	31	
	10/7 & 11/1 & 7/1& 9/1, 3	3882	5	5	5	5	3	10	10	7.5	10	10	10	10	0	90.50	32	
	12/2, 3, 4 & 13/1, 2, 3, 4, 5	6525	5	5	5	10	3	10	10	7.5	10	10	10	10	0	95.50	6	
	14/1, 2, 3,13, 14, 15, 16,	4196	5	5	5	10	3	10	10	7.5	10	10	10	10	0	95.50	7	
	14/24, 25, 26 & 15/1, 2, 3, 4, 5, 6, 8, 9, 10, 11, 12	6864	7.5	10	5	5	3	10	10	7.5	10	5	5	5	0	83.00	50	
	16/ 1 to 12	7838	5	5	5	10	3	10	5	5	15	10	10	10	0	93.00	24	
17/1, 2, 3	2036	5	5	5	10	3	10	10	7.5	10	10	10	10	0	95.50	8		
18/1, 3, 4,5, 6, 7 & 19/1, 2 & 20/1, 2	6919	5	5	5	5	3	10	10	7.5	15	10	10	10	0	95.50	9		
<b>Total</b>	<b>63624</b>																	
2	<b>Block - Reodar</b>																	
	1/1 to 8	4362	5	5	5	10	3	10	10	7.5	10	10	10	10	0	95.50	10	
	1/9 to 15 & 2/1, 2, 3, 4	7657	5	5	5	5	3	10	10	7.5	10	10	10	10	0	90.50	33	
	3/22, 25, 27, 28, 29, 30	6315	5	5	5	5	3	10	10	7.5	10	10	10	10	0	90.50	34	
	4/1 to 7	5710	5	5	5	10	3	10	5	5	15	10	10	10	0	93.00	25	
	4/10, 11, 13, 14, 15, 16	6725	5	5	5	10	2	10	5	5	15	10	5	10	0	87.00	46	
	4/ 18, 19, 20, 21, 22, 24, 25	6230	5	5	5	10	3	10	5	5	15	10	10	10	0	93.00	26	
	4/26 to 34	6064	5	5	5	10	3	10	10	7.5	10	10	10	10	0	95.50	11	
	4/35 to 42 & 44	4939	5	5	5	10	3	10	10	7.5	10	10	10	10	0	95.50	12	
	5/1, 2, 3, 4, 5 & 6/2 & 7/1, 2, 3 & 8/1	8852	5	5	5	10	3	10	10	7.5	10	10	10	10	0	95.50	20	
	12/1, 2, 3, 4, 5	4577	5	5	5	10	3	10	10	7.5	15	10	10	10	0	100.50	4	
	11/2, 3, 4 & 13/1, 2, 3	4237	5	5	5	5	3	10	10	7.5	15	10	10	10	0	95.50	13	
	13/4, 5, 6, 7, 8 & 14/1	3717	5	5	5	5	3	10	10	7.5	15	10	10	10	0	95.50	14	
	3/19, 20	1645	5	5	5	10	3	10	10	7.5	10	10	10	10	0	95.50	15	
<b>Total</b>	<b>71030</b>																	
3	<b>Block - Pindwara</b>																	
	3/1 to 5 & 6/1 & 4/1 to 5	6312	5	5	5	5	3	10	10	7.5	10	5	10	15	0	90.50	35	
	7/2 to 7	4160	5	5	5	5	5	10	15	7.5	10	5	10	5	0	87.50	39	
	13/1, 2, 3 & 14/3, 4 & 15/14, 17 & 16/6, 10, 11 & 18/2 & 19/1, 2, 3, 4	8434	7.5	5	5	5	5	10	15	7.5	10	15	10	10	0	105.00	1	
	15/1, 2, 3, 4, 8, 11, 12 & 16/1, 2, 3, 4, 5, 7, 8, 9 & 14/1, 2	13646	7.5	5	5	5	5	5	10	7.5	15	10	10	10	0	95.00	21	
	1/2 to 7	6415	5	5	5	5	3	10	10	7.5	10	5	10	15	0	90.50	36	
	2/1, 2 & 4/6 to 10	5848	5	5	5	5	3	10	10	7.5	10	5	10	15	0	90.50	37	
	8/1, 2, 3, 9 & 10/1, 2 & 11/1, 3, 7	6545	5	5	5	5	5	10	15	7.5	10	5	10	5	0	87.50	40	
12/1, 2, 3 & 15/5, 6, 7, 9, 10, 13, 16	6697	5	5	5	5	5	10	15	7.5	10	5	10	5	0	87.50	41		

